



National
Autistic
Society

World Autism
Acceptance Week
28 March – 3 April 2022

What makes me 'ME'?



Schools activity
for World Autism
Acceptance Week,
kindly sponsored
by Axcis Education

The National Autistic Society is a charity
registered in England and Wales (269425)
and in Scotland (SC039427)

KS1-2 (England)
Year 2-7 (Northern Ireland)
Year 2-7 (Scotland)

What makes me 'ME'?

Meet Eli, a lively boy in Year 1. Eli is autistic. He has recorded a poem that he wrote with his mum for World Autism Acceptance Week about how being autistic affects him and how it is a different, special part of him that makes him who he is.

Share the video in assembly or during circle time and complete the follow-up activities with your pupils. Encourage them to explore their own likes and dislikes and to recognise that different people like, and are good at, different things and that this is what makes us all unique.

You can download the video, the activities and the poster of Eli's poem from www.autism.org.uk/resources

Eli displays some characteristics that other autistic children share, such as dislike of noise and difficulty answering questions about his day and sitting still. If you want to explore autism with your pupils, please do but be mindful of any children you have on the autism spectrum in your class.

This is Eli



Learning objectives

Pupils will be able to:

- identify special things about themselves that make them who they are
- recognise that is what makes them unique
- appreciate that autism is something that makes a person who they are

Learning resources

- [Eli poem video](#)
- [Follow-up activity slide](#)
- [Worksheet](#)
- [Poem poster](#)

Activities

This is Eli



1. Starter activity

Using the PowerPoint slide, ask your pupils what they see. Record their answers on the whiteboard. Talk about how all children like and dislike different things and find some things easy and some hard. If you can, give an example of something you like or find hard/easy that a friend doesn't. Then explain that you are still friends anyway. Explain how everybody is different and that's part of what makes us special and unique.

2. Main activity: Video

Explain that they are going to learn about a boy in Year 1 called Eli who is autistic. You're going to play them a video of him reading out a poem about his autism. Ask them to listen and think about what the video tells them about Eli. Afterwards ask what he's like (lively, funny) what he finds hard (talking about his day, difficult questions, sitting still). What doesn't he like? (Loud noises.)

On the whiteboard, write the line: "The world would be so boring if we all sang the same song!" Ask the children what they think Eli means by this (if we were all the same, the world would be a boring place). What makes the world an interesting place? (Everyone being different!) What is the main thing that Eli feels about being different? (It's a special part of him that makes him who he is.)

Hand out the worksheets and ask them to fill them in with as much information as they can about Eli and about themselves.

3. Paired activity

In pairs, ask the children to discuss their answers. Do they share any likes or dislikes with Eli or each other? What differences can they find between them? As a class, record some of these differences on the white board.

4. Plenary

Share the poster of Eli's poem with the children. What have they learnt today about being different? Ask if they think there is anyone in the world exactly the same as them (no - everyone is unique).

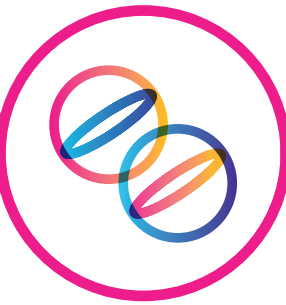
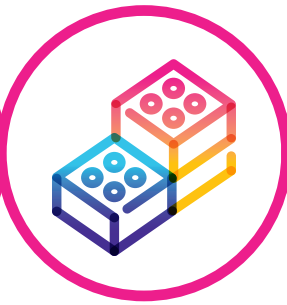
What helps Eli get through his tricky days or moments? (Covering up his ears, his best friends.) Ask who helps them when they have a tricky day. What can we do to help each other at school when we are all different? (Be kind, patient, wait, give people space.)

5. Extending learning (writing)

Children could write their own poem about what makes them 'them', in class or at home.

About Eli

Eli is a lively boy who finds it hard to sit still. He loves drawing and watching YouTube after school. His favourite toys are Lego and his marble run and his favourite animal is a tiger. He finds it hard when people ask him tricky questions about his day so needs time to answer. He also dislikes loud noises and having his hair cut. His favourite thing about school is his friends. They help him out when he has his tricky days.



What makes Eli who he is?

Likes: _____

Dislikes: _____

He finds these things hard: _____

What makes me 'ME'?



I like: _____

I don't like: _____

I find these things easy: _____

I find these things hard: _____

I find these things scary: _____
