



National
Autistic
Society

World Autism
Acceptance Week
28 March - 3 April 2022

Meet Eli

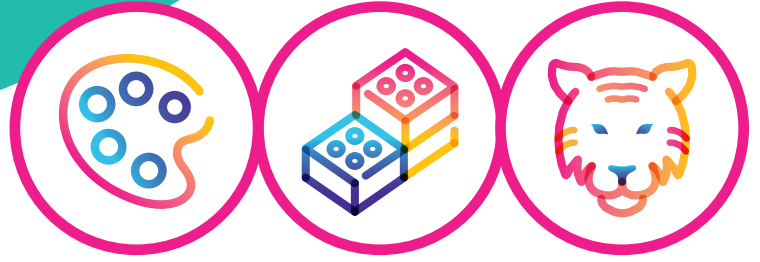


Schools activity
for World Autism
Acceptance Week,
kindly sponsored
by Axcis Education

The National Autistic Society is a charity
registered in England and Wales (269425)
and in Scotland (SC039427)

EYFS (England)
Foundation Phase (Wales)
Nursery and P1 (Scotland)
Years 1-2 (Northern Ireland)

Meet Eli



This video of Eli reading a poem about being autistic is designed for use in circle time during World Autism Acceptance Week. It will help children explore the idea of difference: how we are all different and how those differences are what makes us special and unique. They will also think about what they can do to help children like Eli whose differences sometimes make their days challenging. It is important to tell the children that being autistic isn't just about finding things difficult. It is also about having incredible strengths. Eli is brilliant at reading and remembering the poem.

This activity should take about 20 minutes. There are prompt questions in these notes to help the children engage with Eli's poem.



Curriculum links – Early Years Foundation Stage

- **People and communities:** know about similarities and differences between themselves and others.
- **Communication and language development:** speak and listen to develop confidence and skills in expressing themselves.
- **Personal, social and emotional development:** develop a positive sense of themselves and others.

Learning objectives

To understand that we are all different and it is those differences that make us unique.

Learning resources

- [Eli poem video](#)
- [Listening cards](#)
- [Poem poster](#)

1. Starter activity

Tell the children that this is an important week in the school calendar when people come together to talk about difference – how we are all different (and that's what makes us unique).

Ask them to speak to a partner and find out two things that are the same about them and two things that are different (for example, both like cats and ice cream, only one likes pizza and one playing football). Then have a discussion about how we are all different.



2. Video activity

Tell the children you're going to share a video of a boy called Eli reading out a short poem about himself. Eli is in Year 1 and is just like them in many ways. He likes playing with Lego and marble runs and watching YouTube. But there are some ways in which he is different, just as we are all different, which means he needs understanding and support.

Ask them to think carefully about Eli while they're watching. What does he find hard? What doesn't he like? What could they do to help Eli?

Share the poem

Then ask the children what they remember about Eli. What does he find hard? (Sitting still, talking about his day/answering tricky questions.) What doesn't he like? (Loud noises.)

Explain to the children that even though we are all different some children can find life quite difficult if people don't understand their difference.

For example:

- some like to do the same things every day and if something changes they're not happy
- some people don't like noise, bright lights, certain types of food
- some people find talking to people difficult
- some talk all the time; others don't talk at all
- some people like to be with lots of friends; others like to play on their own
- some like to do all kinds of things; others mostly like doing one thing.

Ask the children if they can remember from the poem who helps Eli when he's having a tricky day (his friends).



Play video

3. Listening activity

Tell the children you're going to listen to Eli's poem again. Make copies of the listening cards, which feature key words from Eli's poem, and hand them out. Ask them to listen carefully and hold up their card when they hear the word that's on it. At the end of the activity, help them to respond to the questions on the back of the cards.



4. Plenary

After watching and listening to Eli's poem, ask the children to think again about Eli, what makes him who he is and what makes everyone special and unique. Ask them to think about what they could do to support someone like Eli. (Give him time to answer, not make a loud noise near him or shout, not get cross if he can't sit still). Explain that we can all help by being kind to everyone, even if they are different from us.



Listening cards

[Front]

NOTE: these cards are double-sided,
Please cut out and stick the front
of each card to the corresponding
back, matching the colour.



me

day

ears

song

friends

you

Listening cards

[Back]

NOTE: these cards are double-sided,
Please cut out and stick the front
of each card to the corresponding
back, matching the colour.

What day is
it today?

What do you
like doing?

Can you sing
a song?

Why does Eli
cover his ears?

What makes
your friend
special?

How do
your friends
help you?